



**We deal with
innovative
Film Coating**

Reconstitution Protocol

TABSAFE En A

Tab safe en h is a ready mix enteric coating system reconstituted using organic solvents. Different reconstitution levels can be achieved using a blend of organic solvents.

SOLVENT SYSTEM : ORGANIC

Recommended Solvent System

1. 100% IPA or Ethanol (10% Reconstitution)
2. 60% IPA and 40% Acetone (10% Reconstitution)

Equipment

- Stainless steel vessel with a capacity that is 25% higher than the total dispersion volume.
- The height of the vessel should be nearly 25% more than its diameter.
- The speed of the propeller of stirrer should be variable and its blade diameter should be nearly 1/3rd of the vessel diameter

Reconstitution procedure

IPA or Ethanol

Weigh the required quantity of IPA or ethanol.

Stir to form a vortex

Add the weighed quantity of TAB SAFE EN A to the vortex

Reduce the speed to remove vortex

stir for further 150 minutes

position the stirrer centrally to prevent air entrapment

Filter the solution through # 80

Continue stirring throughout the coating process

Using IPA + Acetone

Weigh the required quantity of IPA or ethanol.

Stir to form a vortex

Add the weighed quantity of TAB SAFE EN A to the vortex

Stir for further 5 minutes

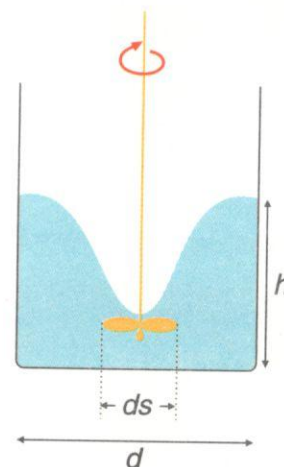
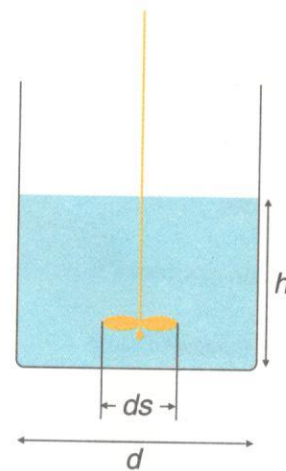
Add required quantity of acetone

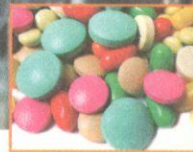
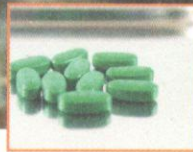
Reduce the speed to remove vortex

Continue stirring for 40 minutes

Position the stirrer centrally to prevent air entrapment.

Filter the solution through # 80 continue stirring throughout the coating process





Coating Parameters for TABSAFE En A: Organic Solvent System



Coating parameters for TABSAFE En A: Organic Solvent system

TABSAFE En A

	24"	48"	60"	12"	36"
Pan diameter	24"	48"	60"	12"	36"
Solvent	Organic	Organic	Organic	Organic	Organic
Solids content (% w/w)	6 - 10	6 - 10	6 - 10	6 - 10	6 - 10
Pan Speed* (rpm)	10 - 14	3 - 5	1.5 - 3	18 - 20	8 - 12
Baffles	4 - 6	6 - 8	6 - 10	3	4
Tablet charge** (kg)	10 - 15	100 - 130	250 - 300	0.5 - 1	40 - 50
Tablet bed temperature (°C)	30 - 33	30 - 33	30 - 33	30 - 33	30 - 33
Spray nozzle (mm)	1	1.2-1.5	1.2-1.5	1	1.2
Number of spray guns	1	2-3	4-6	1	1
Atomizing air pressure (bars)	2.5 - 3	2.5 - 3	2.5 - 3	2.5 - 3	2.5 - 3
Spray procedure	Continuous	Continuous	Continuous	Continuous	Continuous
Spray rate (g/min)	25 - 35	200 - 250	350 - 400	8 - 12	60 - 75
Inlet air temperature (°C)	40 - 45	40 - 45	40 - 45	40 - 45	40 - 45
Drying air volume (cfm)	250 - 300	1500 - 2000	4500 - 5000	50	400 - 500
Weight gain (%)	8 - 9	8 - 9	8 - 9	8 - 9	8 - 9

* Pan speed would depend upon the tablet shape, size, friability and the number of baffles, so as to effect proper mixing during the coating process.