



Reconstitution Protocol

TABSAFE Sol

Universal is a unique, optimized film coating material suitable for use with organic solvents, hydroalcoholic solvents as well as aqueous media. This flexibility makes the system user friendly. The high speed stirrer is not recommended for reconstitution, solvents as well as aqueous media. This flexibility makes the system user friendly. The high speed stirrer is not recommended for reconstitution.

SOLVENT SYSTEM : ORGANIC

Recommended Solvent System

- Organic: Reconstitution level 5% - 6% solids content
- 35% IPA + 65% MDC
 - 35% Chloroform + 65% Ethanol

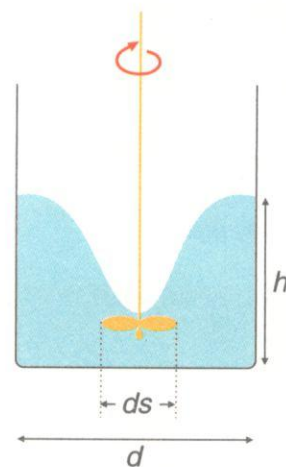
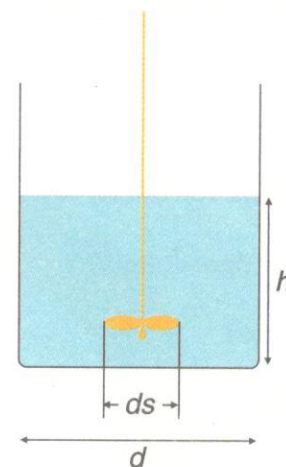
Equipment

- Stainless steel vessel with a capacity that is 25% higher than the total dispersion volume.
- The height of the vessel should be nearly 25% more than its diameter.
- The speed of the propeller of stirrer needs to be variable and diameter of its blade should be approximately 33% of the vessel's diameter.

Reconstitution procedure

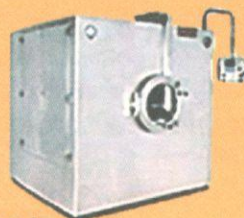
- Weigh the required quantity of IPA/Choloroform.
- Stir to form a vortex
- Add the required quantity of TABSAFE Sol to the vortex
- Stir for further 5 minutes
- Add required quantity of MDC/Ethanol.
- Reduce the speed to remove the vortex
- Continue stirring for 40 minutes

Position the stirrer centrally to prevent air entrapment.
Filter the solution through # 100
Continue stirring throughout the coating process.





Coating Parameters for TABSAFE Sol: Organic Solvent System



Coating parameters for TABSAFE Sol: Organic Solvent system

TABSAFE Sol

	24"	48"	60"	12"	36"
Pan diameter	24"	48"	60"	12"	36"
Solvent	Organic	Organic	Organic	Organic	Organic
Solids content (% w/w)	5 - 6	5 - 6	5 - 6	5 - 6	5 - 6
Pan Speed* (rpm)	10 - 14	3 - 5	1.5 - 3	18 - 20	8 - 12
Baffles	4 - 6	6 - 8	6 - 10	3	4
Tablet charge** (kg)	10 - 15	100 - 130	250 - 300	0.5 - 1	40 - 50
Tablet bed temperature (°C)	35 - 40	35 - 40	35 - 40	35 - 40	35 - 40
Spray nozzle (mm)	1	1.2-1.5	1.2-1.5	1	1.2
Number of spray guns	1	23	46	1	1
Atomizing air pressure (bars)	2.5 - 3.5	2.5 - 3.5	2.5 - 3.5	2.5 - 3.5	2.5 - 3.5
Spray procedure	Continuous	Continuous	Continuous	Continuous	Continuous
Spray rate (g/min)	40 - 60	300 - 600	600 - 800	10 - 15	100 - 150
Inlet air temperature (°C)	55 - 65	55 - 65	55 - 65	55 - 65	55 - 65
Drying air volume (cfm)	250 - 300	1500 - 2000	4500 - 5000	50	400 - 500
Weight gain (%)	2 - 2.5	2 - 2.5	2 - 2.5	2 - 2.5	2 - 2.5

* Pan speed would depend upon the tablet shape, size, friability and the number of baffles, so as to effect proper mixing during the coating process.

** Tablet charge would vary depending upon the tablet shape and size.